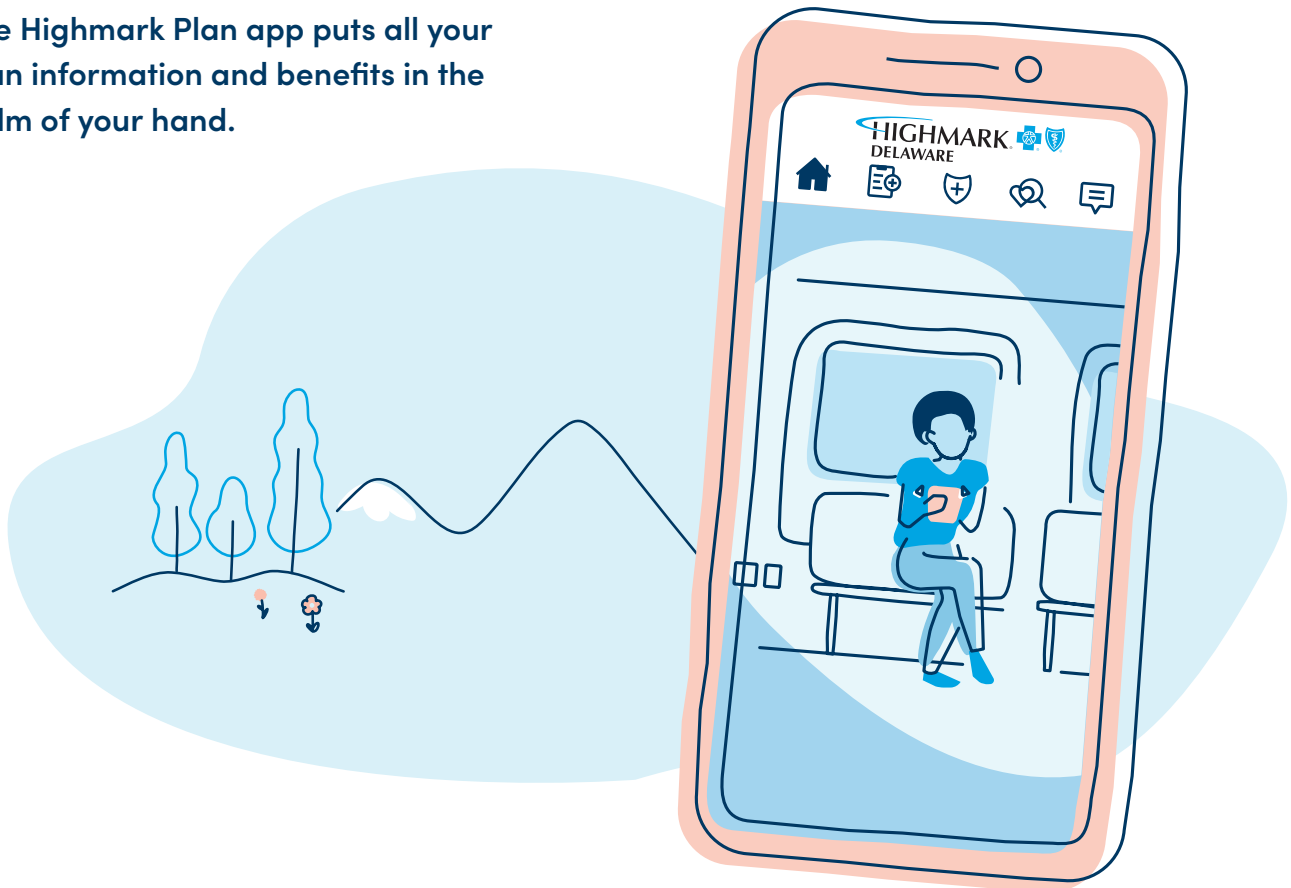


The most convenient way to manage your plan on the go.

The Highmark Plan app puts all your plan information and benefits in the palm of your hand.



Through the app, you can:



Access your virtual member ID card any time.



See recent claims activity.



Find in-network care or compare costs of procedures.



View covered family members' plan information.



Get answers to benefit questions.



Use fingerprint or face recognition for quick, secure sign-in.



Download the Highmark Plan app today.

Sign up right on the app, or use your same login info from the member website if you already have an account.



Apple and the Apple logo are trademarks of Apple Inc., registered in the U.S. and other countries and regions. App Store is a service mark of Apple Inc. Google Play and the Google Play logo are trademarks of Google LLC.

Highmark Blue Cross Blue Shield Delaware is an independent licensee of the Blue Cross Blue Shield Association.

The Plan complies with applicable Federal civil rights laws and does not discriminate on the basis of race, color, national origin, age, disability, or sex.

ATENCIÓN: Si usted habla español, servicios de asistencia lingüística, de forma gratuita, están disponibles para usted. Llame al número en la parte posterior de su tarjeta de identificación (TTY: 711).

请注意：如果您说中文，可向您提供免费语言协助服务。请拨打您的身份证背面的号码（TTY：711）。

H3957_H3916_H5106_21_9658_C

